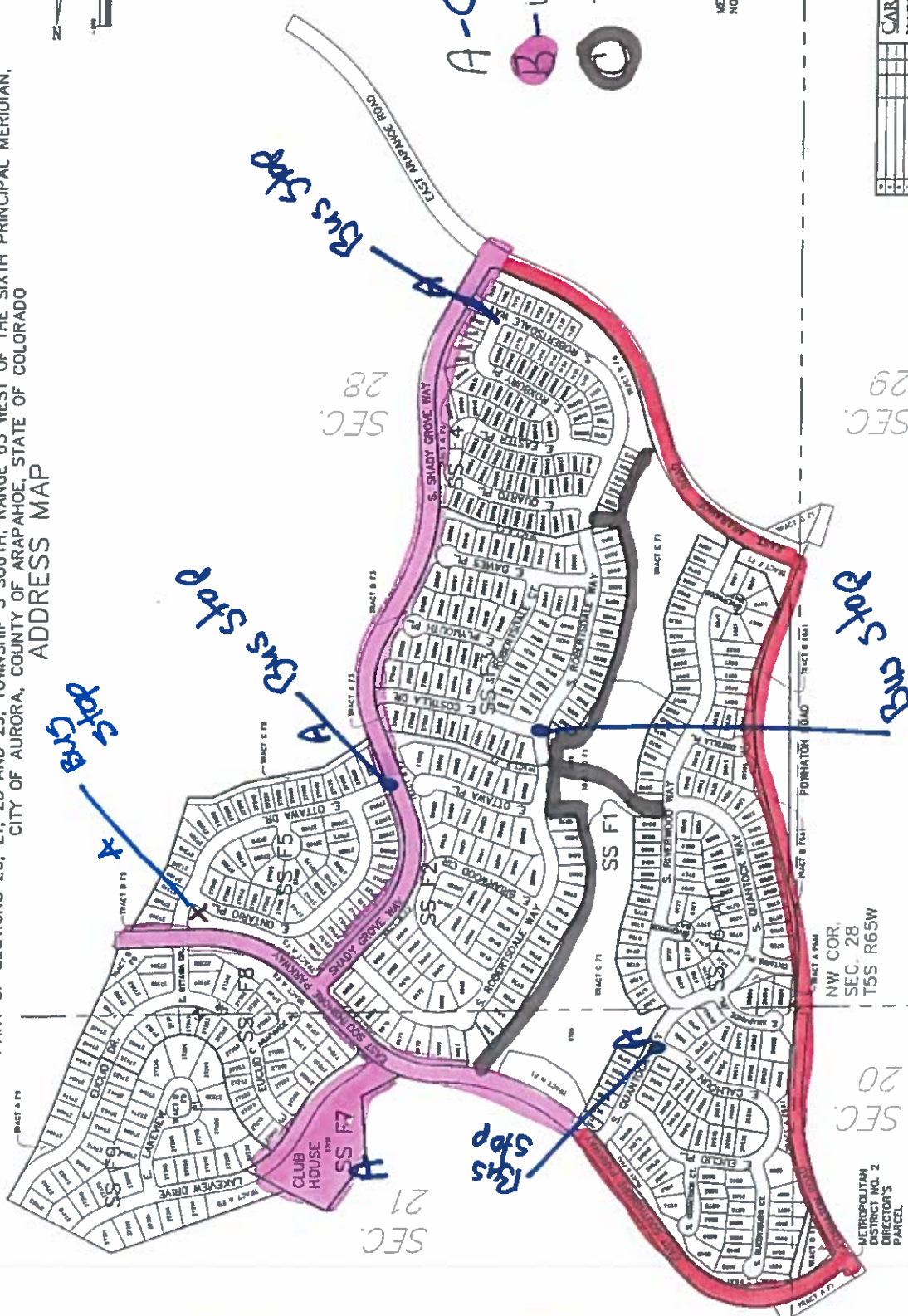


# SOUTHSHORE AT AURORA

PART OF SECTIONS 20, 21, 28 AND 29, TOWNSHIP 5 SOUTH, RANGE 65 WEST OF THE SIXTH PRINCIPAL MERIDIAN,  
CITY OF AURORA, COUNTY OF ARAPAHOE, STATE OF COLORADO  
ADDRESS MAP



A - Clear First 2 inches  
 B - walks @ 3 inches  
 Trails 3 inches

METROPOLITAN DISTRICT  
 NO. 1 - DIRECTOR'S PARCEL

SW COR. SEC. 28  
 T5S R65W

PROJECT: SOUTHSHORE AT AURORA	
DATE: 08/24/10	SCALE: 1" = 200'
CREATED BY: [Name]	CHECKED BY: [Name]
DATE: 08/24/10	DATE: 08/24/10
REVISIONS:	SHEET 1 OF 1
	FOR THE ENGINEER
	(S.E. 12, 2007)

\* Bus stops and mail boxes  
 Priority Bus stops by 8am